



PartitionMagic is a utility for partitioning hard disks of up to 80GB. PartitionMagic provides for creating new partitions, resizing current partitions, redistributing free space, copying partitions or merge partitions without losing data on the hard disk.

PartitionMagic Requirements:

Operating Systems	Minimum Ram	Minimum Power
Windows 95/98	32 MB	468 or compatible
Windows ME	32 MB	Pentium 150 MHz or compatible
Windows NT 4.0 Sp4	32 MB	486/33 or compatible
Windows 2000 Pro.	64 MB	Pentium 133 MHz or compatible
Windows XP	64 MB	Pentium 233 MHz or compatible
Disk Space	54 MB	

The installation went smoothly with no problems. The Control Panel Install/Uninstall feature provides for uninstalling the product.

PartitionMagic provides the ability to divide a hard disk into multiple logical partitions that appear to be separate hard disks. These partitions are given drive letters just like the hard disk, CD drive and floppy drive. This can be done without losing data on the hard disk. PartitionMagic also provides the ability to:

- Change partitions by adding space taken from other partitions or unallocated space.
- Reduce the size of partitions by moving the space to other partitions
- Merge partitions.
- Change the disk file system between FAT16, FAT32 and NTFS.

All of these functions can be done running under Windows.

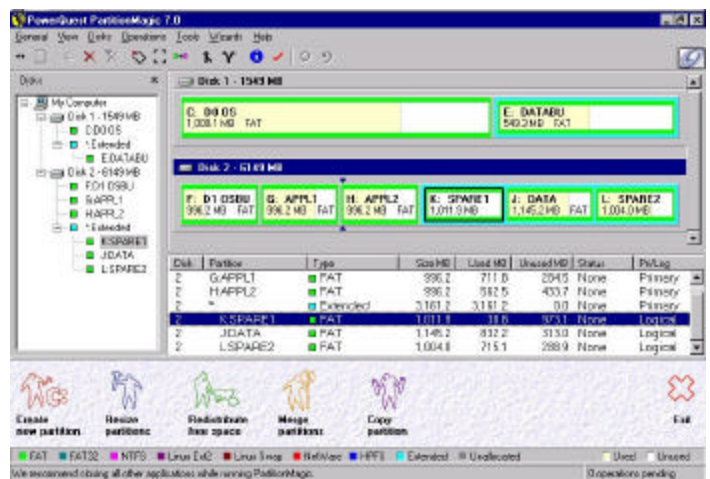
A function to create a rescue disk is provided to allow running PartitionMagic under Dos. The rescue disk may be needed if you have an operating system that does not support PartitionMagic or have a problem running Windows. The rescue disk also may be needed if you contact PowerQuest support. The install process includes clear instructions on creating the rescue disks.

The CD includes BootMagic, which provides the ability to install more than one operating system and choose the one to run when you start your computer. I did not have a second operating system to use, so I have not tested this function.

A 150-page user guide is included. The guide is well written and provides clear instructions for all supported operating systems. It is a good idea to read the guide and become familiar with all of the options for your operating system and its file systems types.

PowerQuest provides technical support to registered users free for 30 days after the initial contact. The Technical Support web site includes an overview of support options, an e-mail support request form, a list of error messages with resolutions and answers to frequently asked questions. There is a toll charge number for phone support. I encountered no problems, so I did not attempt to use the support.

This screen appears when you launch PartitionMagic:



Since my system has two hard drives with a total of eight partitions, the screen looks very busy and complicated. A little study of the screen shows that it gives a wealth of information about your hard drive system. The left hand panel shows a tree view of the hard drives, showing the various partitions and whether they are primary or extended. The upper right hand panel shows a color-coded graphic view of the same information. The lower right hand panel shows a detailed view. I created this configuration using PartitionMagic.

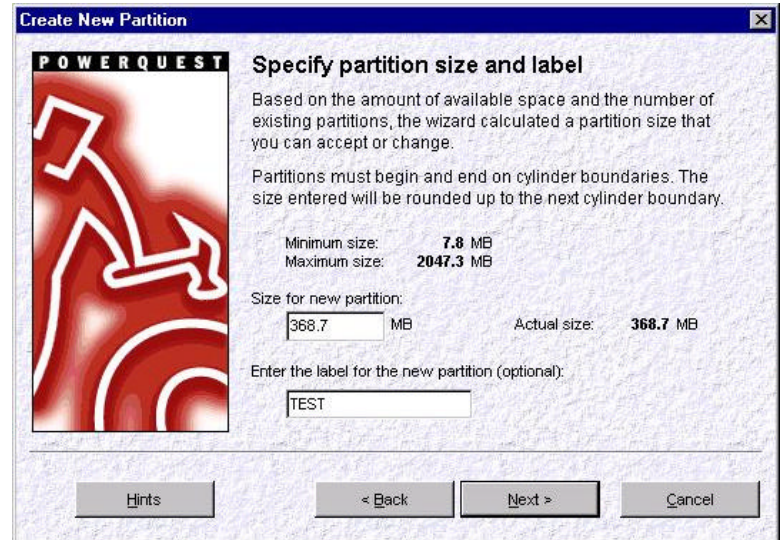
The icons in the panel along the bottom of the screen look a little unusual, but their meaning is clearly stated in text. An explanation for the color-coding is on the line under this.

Clicking any of the icons produces a wizard to guide the user through the process. Clicking “Create New Partition” produces a series of screens including this one.

This wizard walks you through each step of gathering the information PartitionMagic requires to perform the operation. The information required to create a new partition include:

- Which hard disk to partition
- Whether an operating system will be installed on it
- The file system type to use
- Whether to make it primary or logical
- Where to locate the partition
- Where the space comes from
- The size of the partition

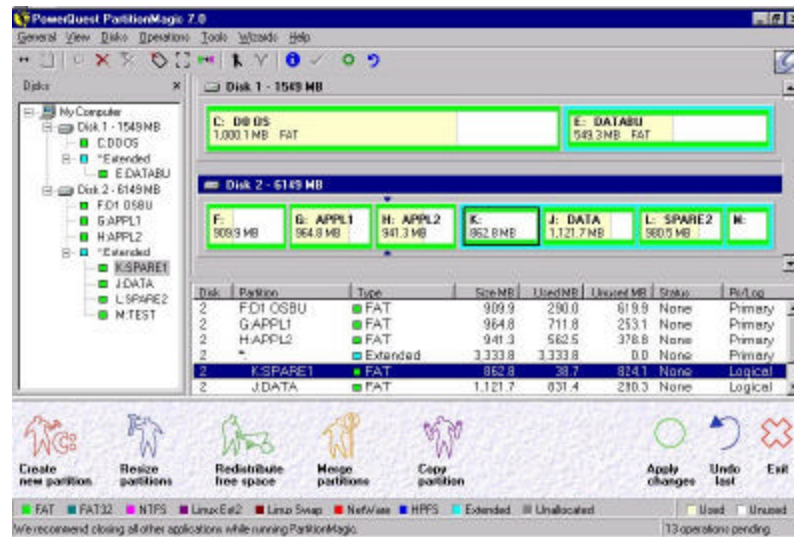
There is a “hint” button in each step that produces a help screen to explain the information requested.



PartitionMagic goes back to the home screen after all of the wizard information is gathered.

Note that two new icons have appeared in the bottom panel. At this point, no changes have been made to the system. The “Apply Changes” icon must be clicked to finish creating the new partition. The other icon deletes the changes without modifying the configuration. All wizards work the same way.

PartitionMagic is for fairly advanced users. However, with a little study of the user guide, anyone can understand these functions. Using the wizards makes it very simple to carry out the operations.



To get the best results, you should plan how you want your system to look. There is a very informative tutorial on the benefits of partitioning and how to organize your drive on the PowerQuest web site at <http://www.ugr.com/Organize.htm>

PartitionMagic is not a product you will use every day, but it is a very helpful tool in configuring your system to get the best performance and efficiency from your hard disk. It can help you organize and protect the data and programs in your system.

The retail price of PartitionMagic is \$69.95. However, PowerQuest has the following offer:

User group members may purchase PartitionMagic v7 at a special price of \$35 by ordering from the secure web site at www.ugr.com/order/. Indicate the special price code of UGEVAL01 with your order.

Editors Note: A better view of the graphics in this article can be found on the Product Review page of the PPCUG web site at: www.crossvilleinfo.com/ppcug.